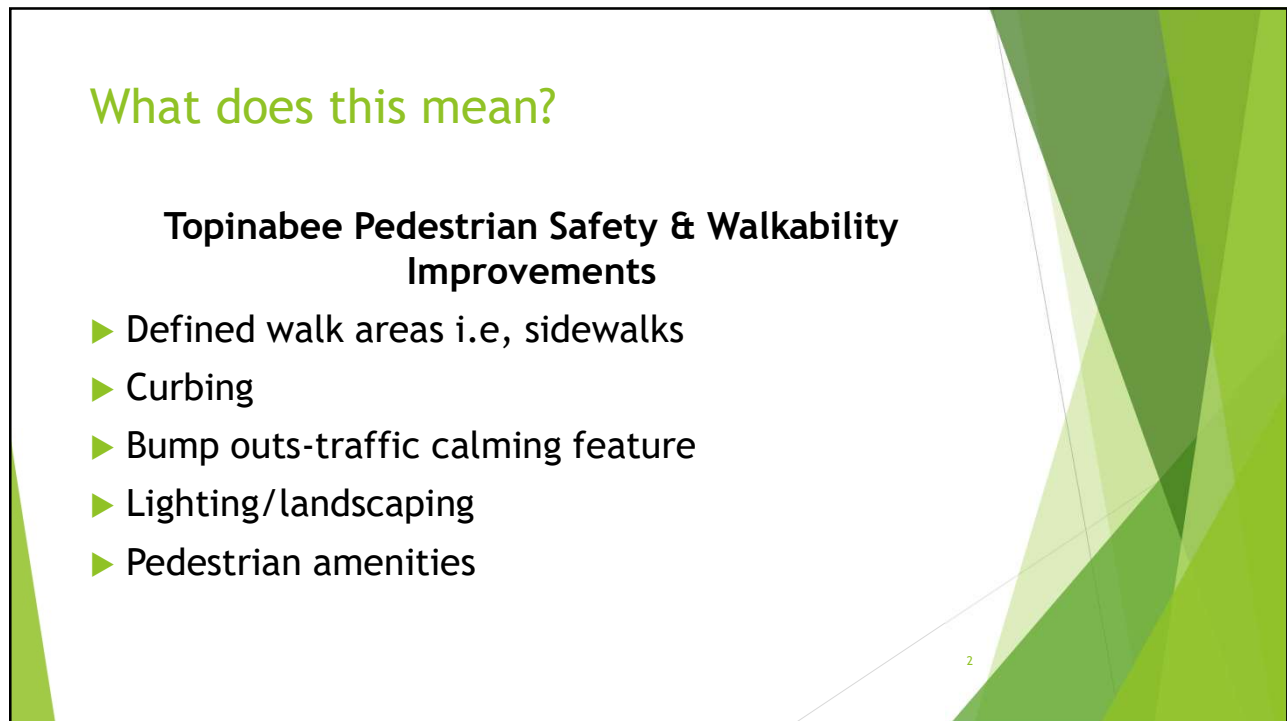


1



2

What does this mean?

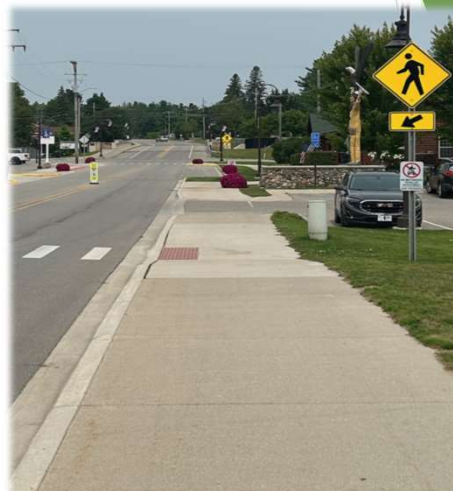
*Indian River*



3

What does this mean?

*Indian River*



4

What does this mean?

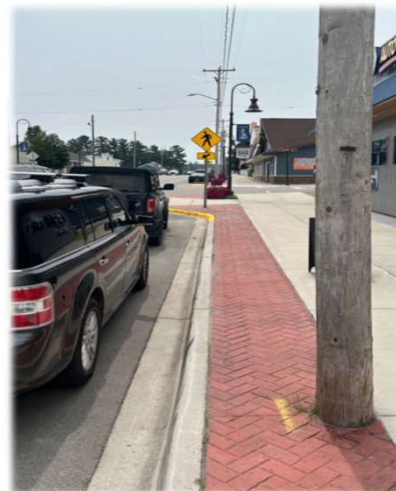
*Indian River*



5

What does this mean?

*Indian River*



6

What does this mean?

*Alanson*



7

What does this mean?

*Cheboygan*



8



What does this mean?

*Cheboygan*



9

What does this mean?

*Pellston*



10

What does this mean?

*Pellston*



11

What does this mean?

*Pellston*



12



What does this mean?

*Topinabee*



13

What does this mean?

*Topinabee*



14

What does this mean?

*Topinabee*



15

What does this mean?

*Topinabee*



16



## What does this mean?

### *Topinabee*



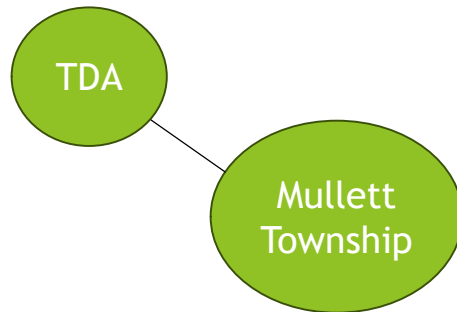
17

## Why Now?

- Pedestrian safety needs to be a priority
- Stage now set-other projects are complete
- Agency support is available
- Access to grant funding and grant writing
- Community walkability will attract and enhance businesses
- Business is growing in surrounding communities

18

## Who can help?



19

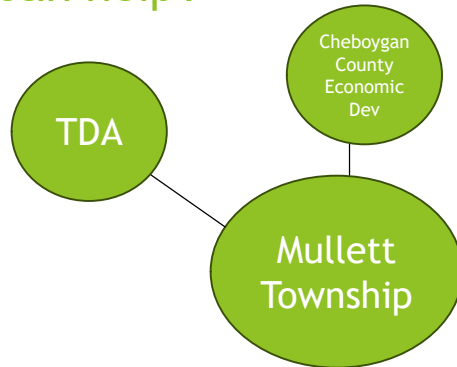
## Who Can Help?

### ► Topinabee Development Association

- *The Mission of the Topinabee Development Association is to preserve and enhance the unique historical character and charm of Topinabee while promoting future growth and development of its business district.*
- We're not from the government but we are here to help and have worked with the Twp since 2008, to help facilitate improvements in the community.

20

## Who can help?



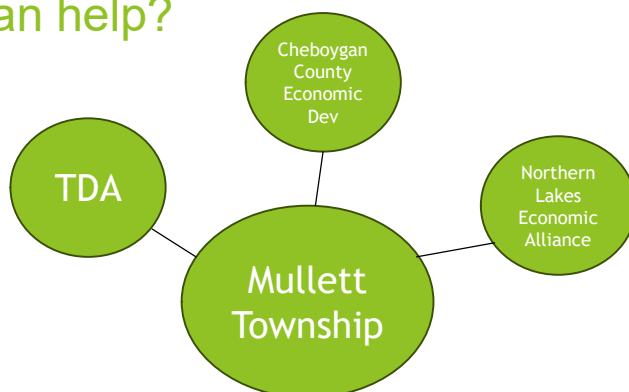
21

## Who Can Help?

- ▶ Sharen Lange, Cheboygan County Economic Development Coordinator
  - ▶ “My efforts will focus on guiding, coordinating communication, grant efforts, resources, partner agencies, key projects, and stakeholder groups to create an environment where we are all working together to build stronger communities.”

22

## Who can help?



23

23

## Who Can Help?

- ▶ Payton Heins, President, NLEA
- ▶ Jessica Lovay, Comm. Dev. and Grant Specialist
  - ▶ Help communities create vibrant places that retain and attract the workforce for a strong economy
  - ▶ Help write, package and refine competitive grant applications for state, federal, and private funding sources in support of infrastructure improvements, development and placemaking
  - ▶ Assist communities in administering those grants

24

24



## Who Can Help?

### Grant opportunities initially identified

- ▶ **Public Spaces Community Places**
  - ▶ Utilizes donations-based crowd funding
  - ▶ Revitalize or create public spaces
  - ▶ MEDC matching up to \$50k or 50%
- ▶ **Build MI Community Grant Initiative-MEDC**
  - ▶ Promote investment by emerging developers w/limited experience
  - ▶ RE development gap financing for small scale dev. projects
- ▶ **Michigan Community Revitalization (MCRP)**
  - ▶ Grants/loans-eligible projects-contaminated, blighted, obsolete

25

25

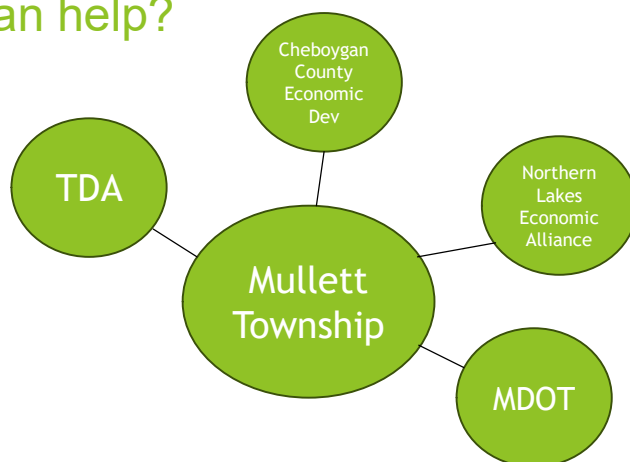
### ▶ Grant opportunities initially identified

- ▶ **Transportation Alternatives Program (TAP)**
  - ▶ Grant program-Federal funds-provide safe transportation options
  - ▶ Twp's can apply-partnership with eligible agency ie, road commission
- ▶ **Community Transformation-DTE**
  - ▶ Focuses on safe, attractive, walkable, connected community
- ▶ **Safe Streets & Roads for All Funding Opportunity**
  - ▶ USDOT Safe streets and roads for all-prevent deaths and injury

26

26

## Who can help?



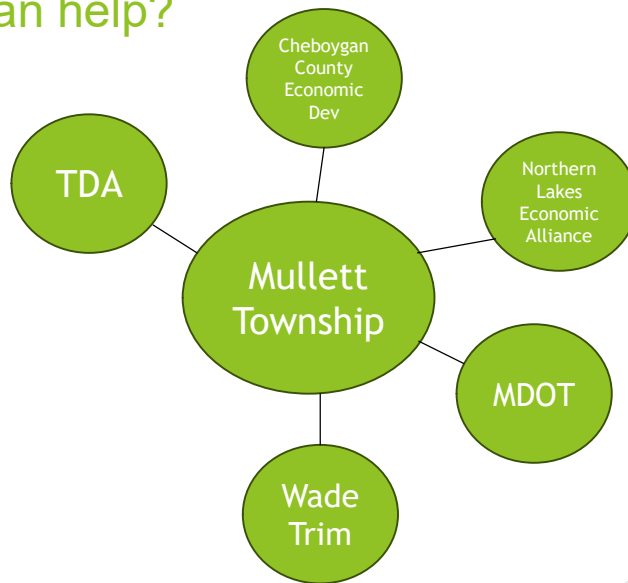
27

## Who Can Help?

- ▶ Michigan Department of Transportation
  - ▶ First agency TDA consulted with.
  - ▶ Directly involved in numerous meetings in the community.
  - ▶ Pedestrian Safety Improvement initiative developed with input from them i.e, highway right-of-way, etc.

28

## Who can help?



29

## Who Can Help?

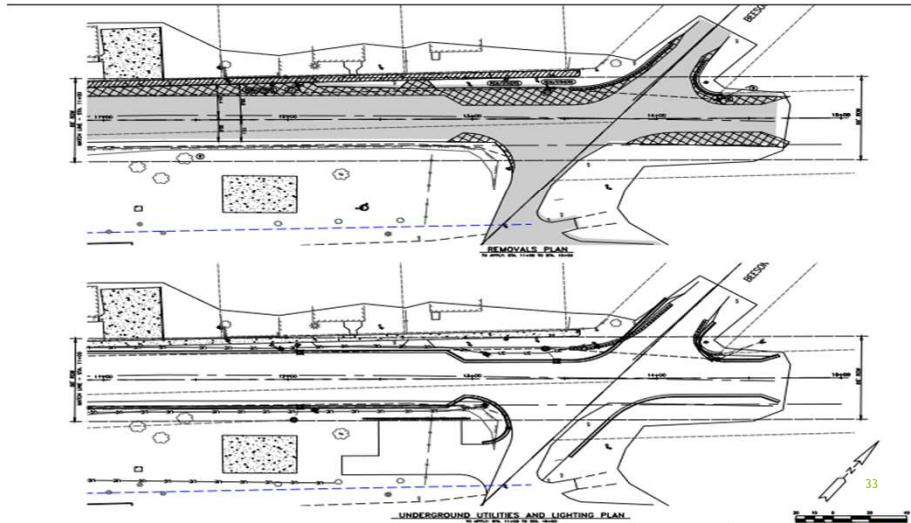
- ▶ Paul Repasky, Wade Trim, Gaylord, MI
  - ▶ Designed and engineered parking project north of pavilion
  - ▶ Designed and engineered parking project south of the library
  - ▶ Has designed and engineered, in concert with the previous Twp board, local businesses and MDOT, the Pedestrian Safety Initiative for Topinabee

30



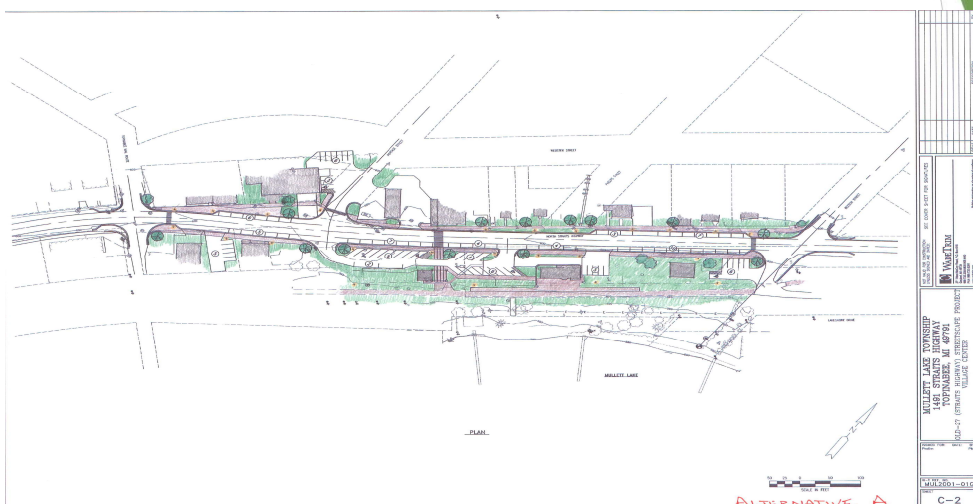


## Who Can Help?



33

## Alternative A bump-outs



34

## 36



## Who Can Help?

- ▶ Village Center Zoning Overlay District
  - ▶ Developed several years ago in recognition of the unique building placement in communities such as Topinabee
  - ▶ County enacted an ordinance to allow for growth and development in village centers
  - ▶ Uniquely relevant to Mullett Township's desire to enhance fire safety capabilities in the Township
  - ▶ Consulted with Michael Turisk, Dir. Planning and Zoning
    - ▶ What is possible to do on Twp parcel
    - ▶ Process for acquiring use of additional land

37

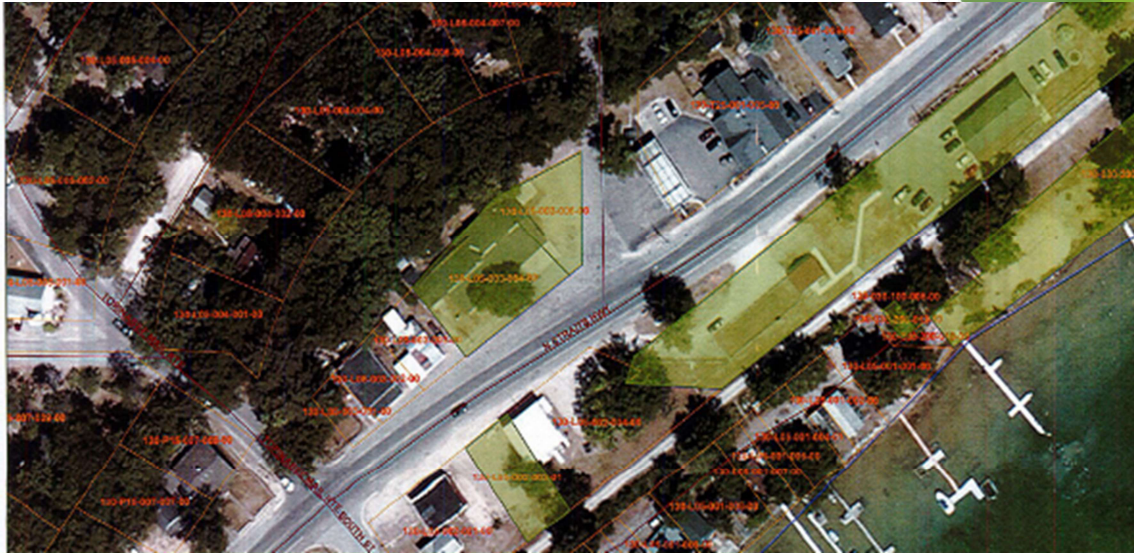
## *Intersection-Portage and M-27*



Impacted Building and Intersection

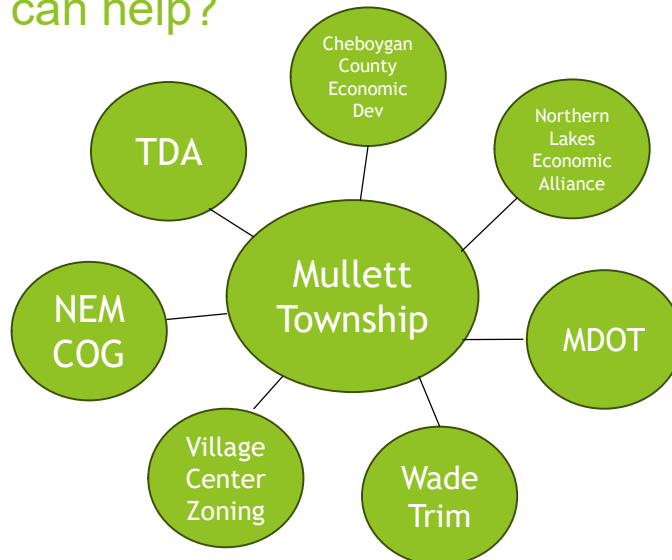
38

## Topinabee Village Zoning



39

## Who can help?



40

40



## Who Can Help?

### ► **Northeast Michigan Council of Governments (NEMCOG)**

- Multi county organization-pools resources for assistance
- Focused on cities, townships, counties in rural areas
- Assists Townships et.al, w/strategic and/or Master Planning, transportation planning, grant writing, economic and community development
- Denise Cline-Deputy Director/Chief Planner

41

41

Next Steps?

42

## TDA recommendations on Next Steps

### ➤ TDA proposes the Township:

- Engage NEMCOG now, to assist with the development of a Master Plan—Discussion on topic with Denise Cline
- Agree to move the Pedestrian Safety Initiative forward on a dual track with development of a Master Plan

43

43

## TDA recommendations on Next Steps

### ▶ TDA proposes the Township:

- Determine within the scope of a Planning effort if a redevelopment of the Town Hall parcel and building could satisfy its Fire Safety objectives
- Pending relevant decisions, determine if the TDA or others, should facilitate the assembly of working group(s) to advance these potential objectives....which the TDA is willing to do.

44

44

